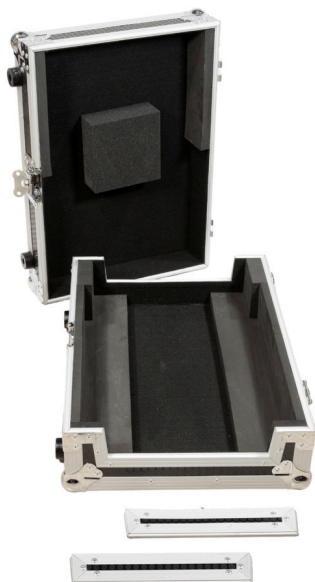


# WM-CDJ3000X

Professional protection, distinctive design and guaranteed quality for your equipment



EAN: 8436560474753

Weight: 7.7 kg

External dimensions (width x depth x height):  
575w x 430d x 230h mm.

Internal dimensions (width x depth x height):  
520w x 360d x 80h mm.

Internal lid dimensions (width x depth x height):  
530w x 370d x 80h mm

## COMPATIBILITY

- Alphatheta® CDJ-3000X

Walkasse Professional flight case, made in Spain, specially designed for your Alphatheta® CDJ-3000X. WBP 100% Finnish birch plywood 7mm melamine extremely resistant to scratches and bumps. Interior space for cables and other accessories.

## KEY FEATURES

- Stage grip extra durable honeycomb external surface.
- Stackable ball corners.
- Front and rear access doors, detachables
- Butterfly lock with padlock
- Twin solid aluminium profiles
- Professional Handle stiffly recessed at panel and fitted with springs.
- Reinforced rubber feet.
- Front and Rear access.
- Convenient inner space for cables and AC.
- Decksaver® compatible.



For additional information, visit [www.walkasse.com](http://www.walkasse.com)

All brands mentioned are copyrighted.

